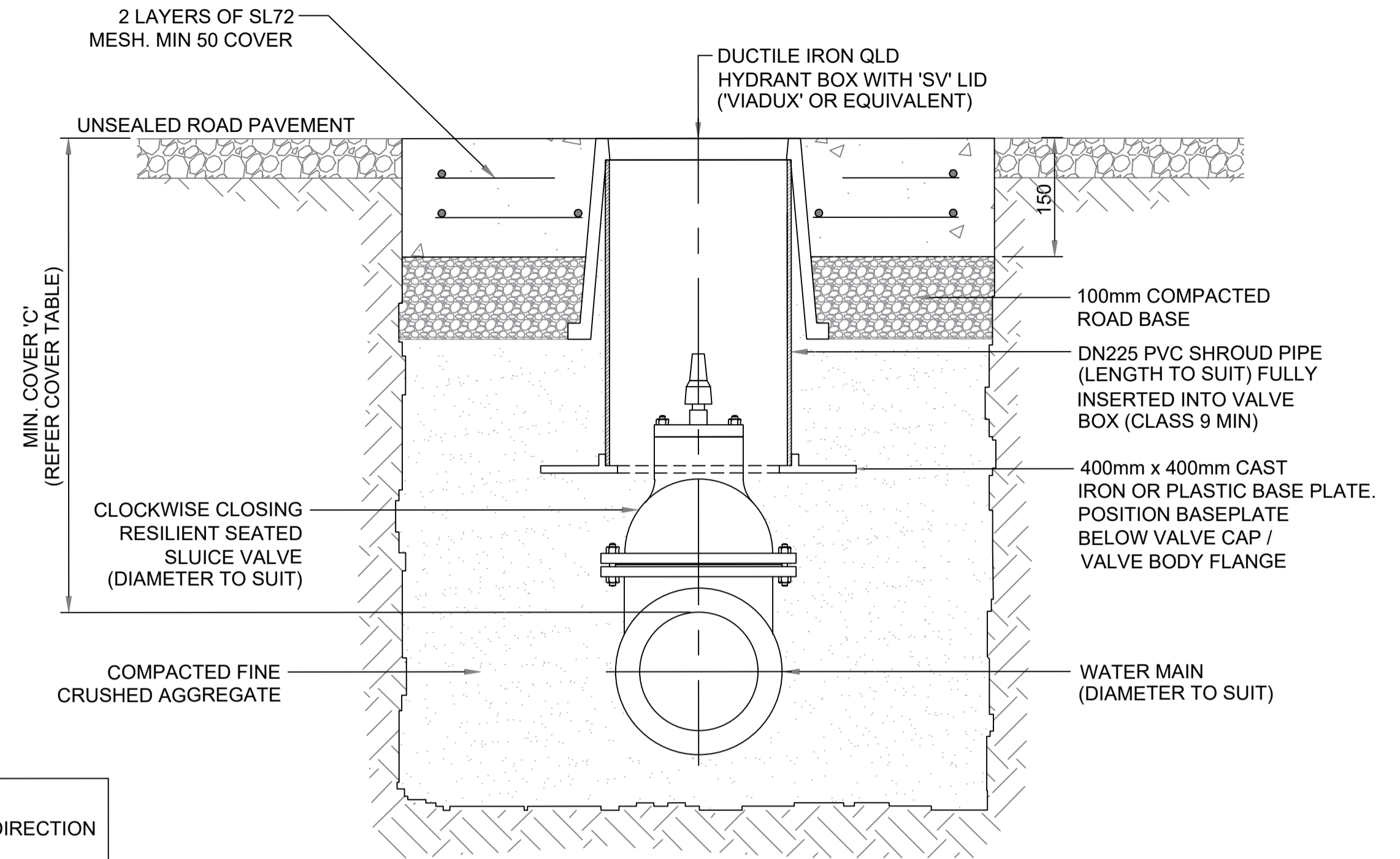
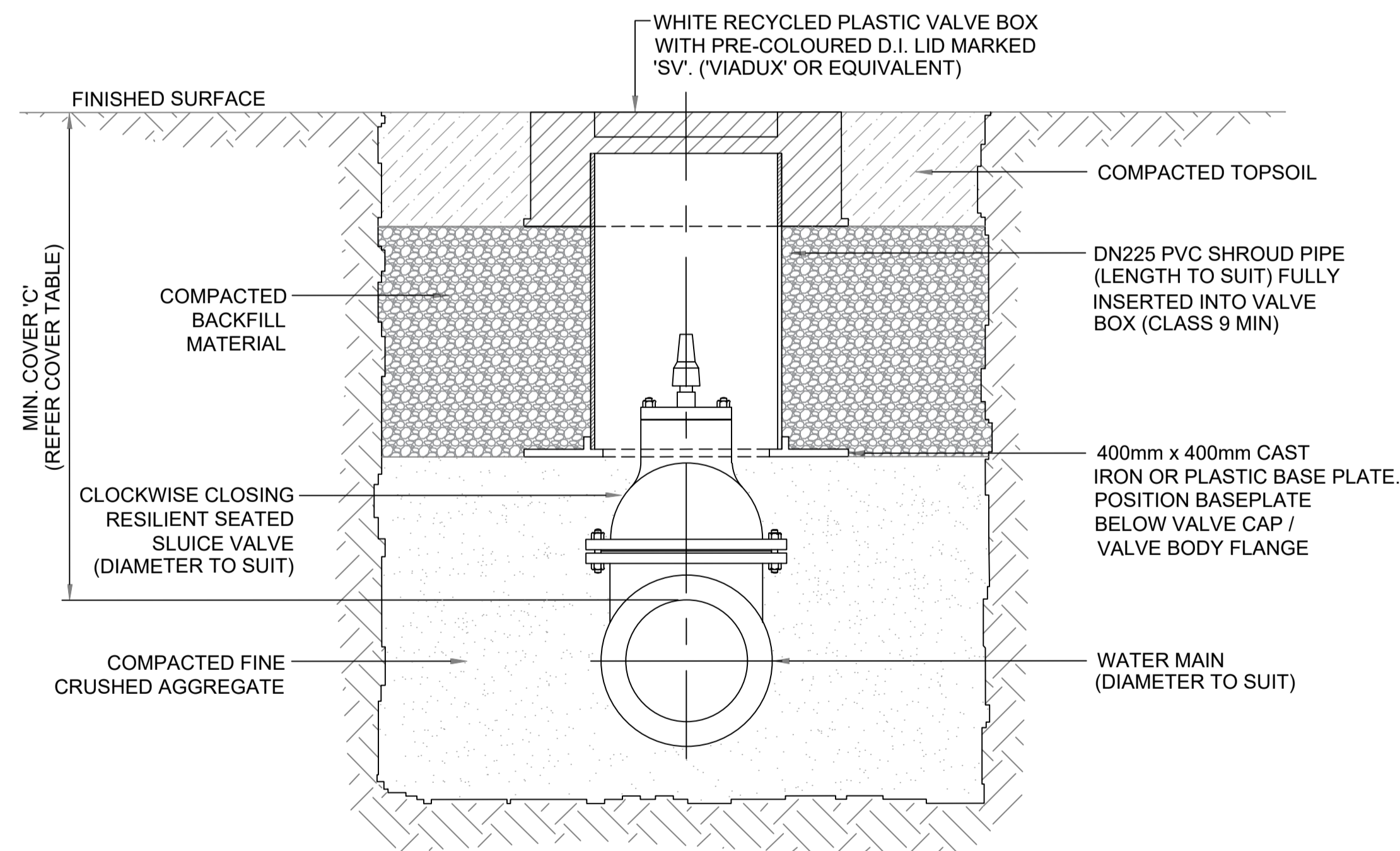


**SLUICE VALVES (IN SEALED ROAD PAVEMENT)**  
SCALE 1:10 (A3)



**SLUICE VALVES (IN UNSEALED ROAD PAVEMENT)**  
SCALE 1:10 (A3)

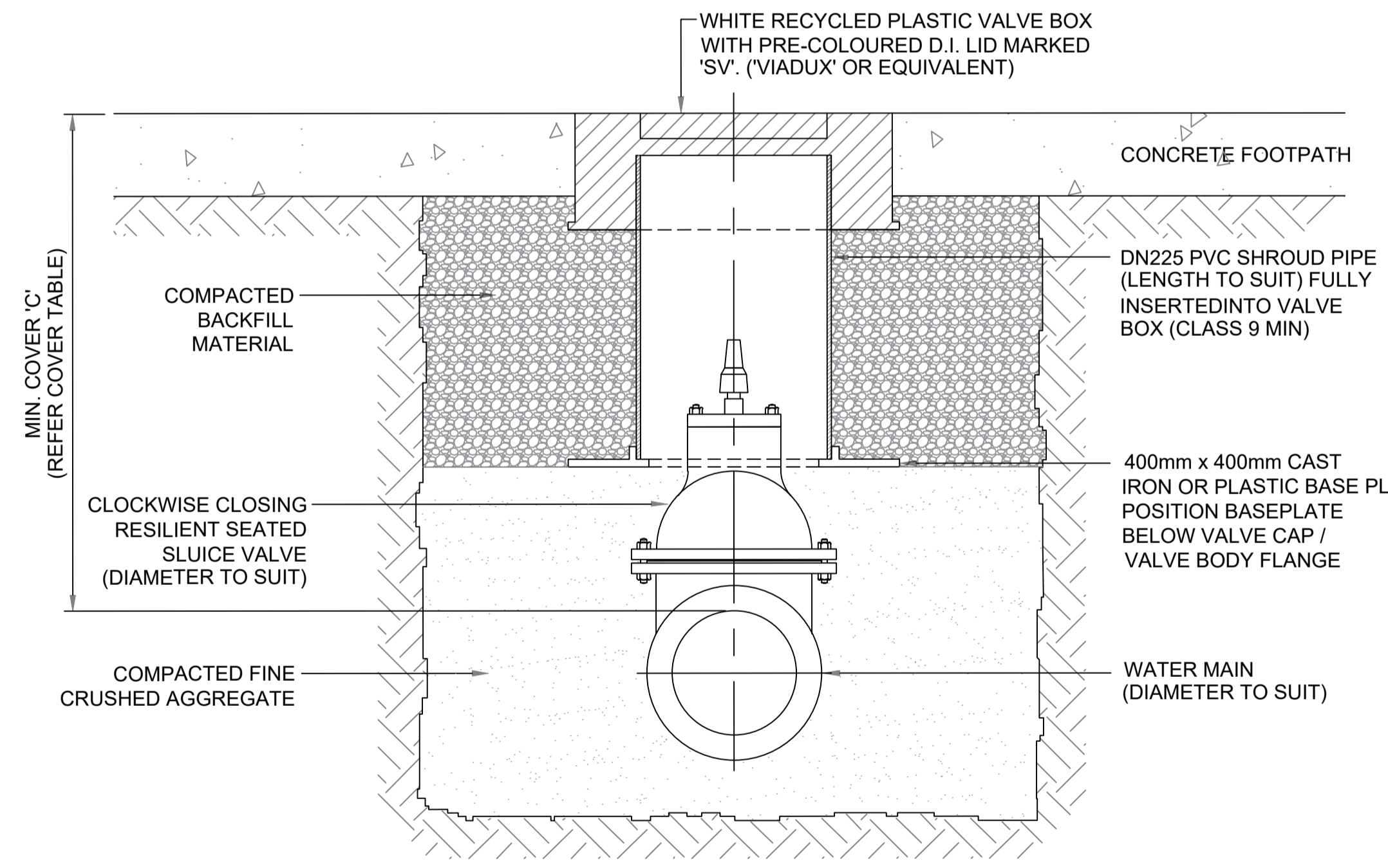
**NOTES:**  
1. SLUICE VALVES TO BE CLOCKWISE CLOSING. DIRECTION ARROW TO BE DISPLAYED ON SPINDLE TOP.  
2. REFER BSC.105 FOR DETAILS OF VALVE MARKING.  
3. WHERE DISTANCE BETWEEN VALVE SPINDLE AND TOP OF VALVE BOX IS GREATER THAN 500mm, AN EXTENSION SPINDLE IS TO BE PROVIDED.



**SLUICE VALVES (WITH NO VEHICULAR LOADING)**  
SCALE 1:10 (A3)

**COVER TABLE**  
(FOR VERTICALLY PLACED VALVES)

VALVE DIAMETER (mm)	MINIMUM COVER 'C' (mm)
100	500
150	550
200	630
250	730
300	810
375	980
450	1160
500	1285
600	1475
750	2000



**SLUICE VALVES (IN CONCRETE FOOTPATH)**  
SCALE 1:10 (A3)

A	ORIGINAL ISSUE	J.S.	10.2024
ISSUE	AMENDMENT DETAILS	INITIALS	DATE



**DESIGN UNIT**  
COUNCIL OFFICES  
70 STATION STREET  
MULLUMBIMBY  
NEW SOUTH WALES 2482  
PHONE 02 6626 7000  
FAX 02 6684 3018  
WEBSITE www.byron.nsw.gov.au

DESIGN ENGINEER	JASON STANLEY	DATE	25.10.24
DRAWN	ENGINEERING DESIGN UNIT		
SCALE	NOT TO SCALE		

PROJECT:	<b>WATER SUPPLY STANDARDS</b>
PLAN TITLE:	<b>SLUICE VALVE INSTALLATION DETAILS</b>

DRAWING NUMBER:	<b>BSC. 107</b>
	<b>OCT 2024</b>

